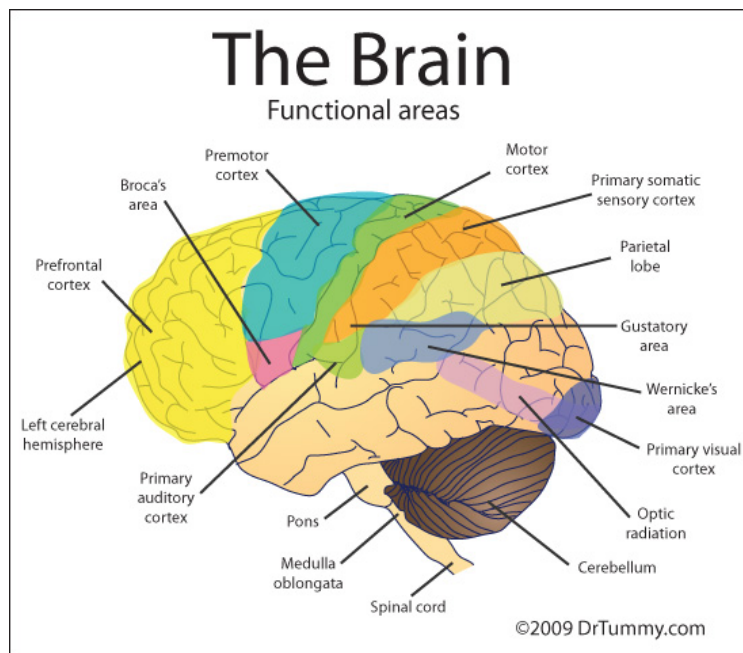


# Autism & Sensory Training

**May researchers believe that certain symptoms Autism are a form of delayed development/and or misconnection of three major functions of the brain:**

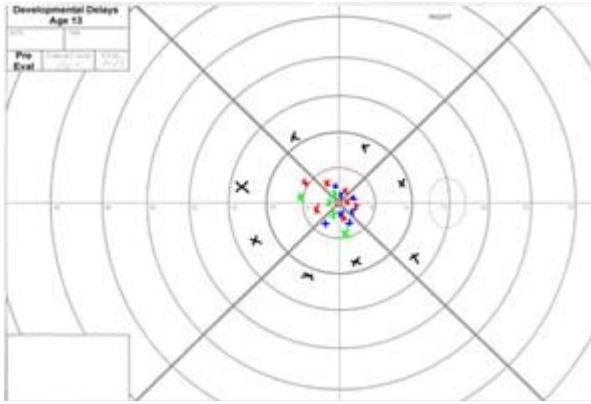
1. **Vestibular** – movement of the body and balance
2. **Auditory** – auditory/sound input
3. **Visual Processing** – sight and development of vision processing

All of these functions not only must develop properly, but must connect and communicate in order to reduce or alleviate a majority of the symptoms suffered by Autistic patients.

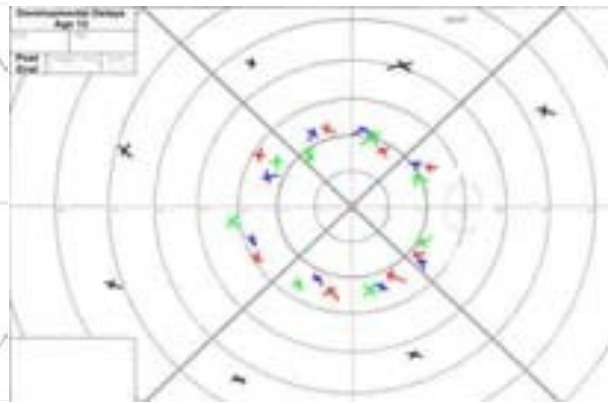


Sensory learning is the term that has now been used to describe a newer form of thinking and treating of Autism.

What has been found, is that in a majority of Autistic patients, the Auditory, Visual and Vestibular systems are limited, or not fully developed. New technology now allows trained physicians to utilize Visual Field Pre Sensory Learning Maps to determine if the sensory fields are closed.



Visual Field Prior to Sensory Training  
Noticed how constricted the dots, and how centralized they are, indicating a closed or constricted field of learning and sensing the world around them.



Visual Field Post Sensory Training.  
Notice how much more open the dots and how less central they are, indicating a wider range of sensory input availability.

### **About Advanced Vision Therapy**

- **Certified Vision Therapist – treating ASD, Vision & Learning Problems, Reading Disabilities and Traumatic and Acquired Brain Injury.**
- **Practicing in Lancaster County for over 10 years.**
- **Treatments and therapy are individualized and tailored to each patients needs.**
- **Constant communication between therapists and doctors in all disciplines.**
- **Evening & Daytime Hours Available.**
- **Utilizing the latest technology and research.**
- **Most major medical insurances' accepted for Medical Evaluation by Dr. Rob Lauver, FCOVD, Neuro -Developmental Optometrist.**
- **We work very closely with all referring doctors to insure best possible outcomes**
- **Guaranteed improvement in visual skills**
- **ASD – Vision Therapy increases the speed of success for accompanying therapies such as Speech, Occupational and Physical.**
- **65% of the brain (pathways) is wired for vision, we treat the brain and the eyes as a team**
- **80% of information processed is thru the visual pathways.**
- **Financial Aid available to those who qualify.**
- **99% patient satisfaction rate.**
- **Dr. Lauver – Central Penn Parent Health Care Hero Finalist\***
  - **Winner to be announced March 27, 2015**